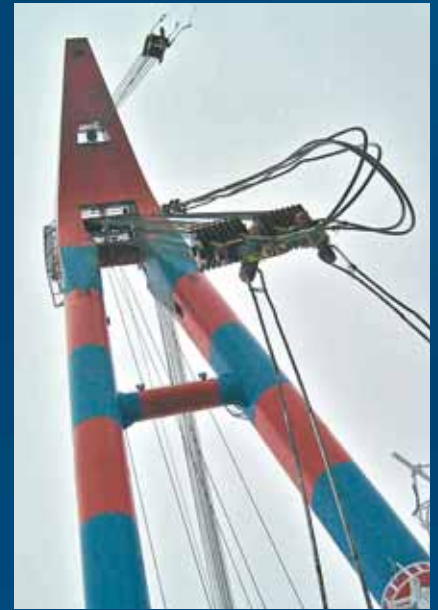


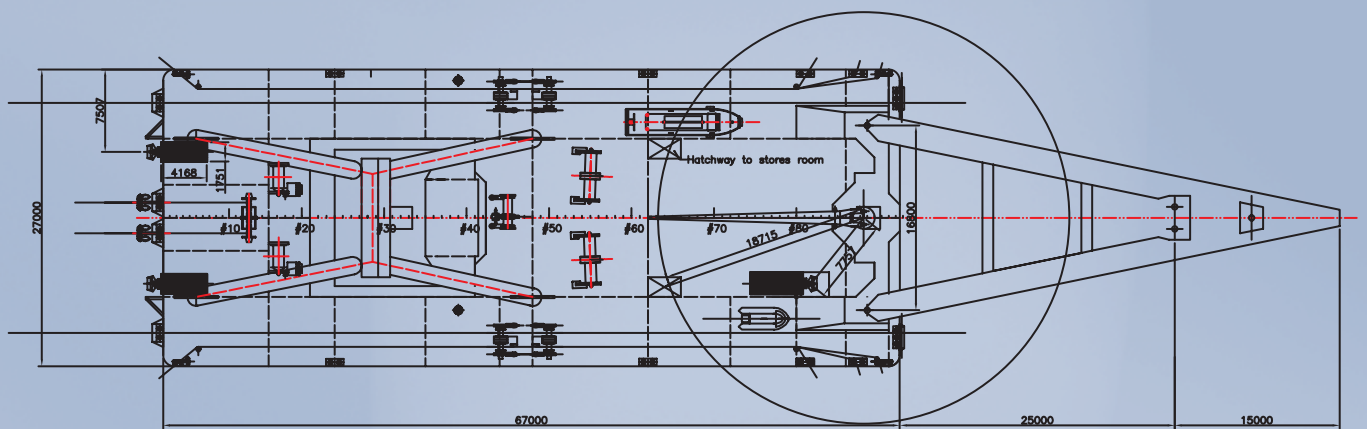
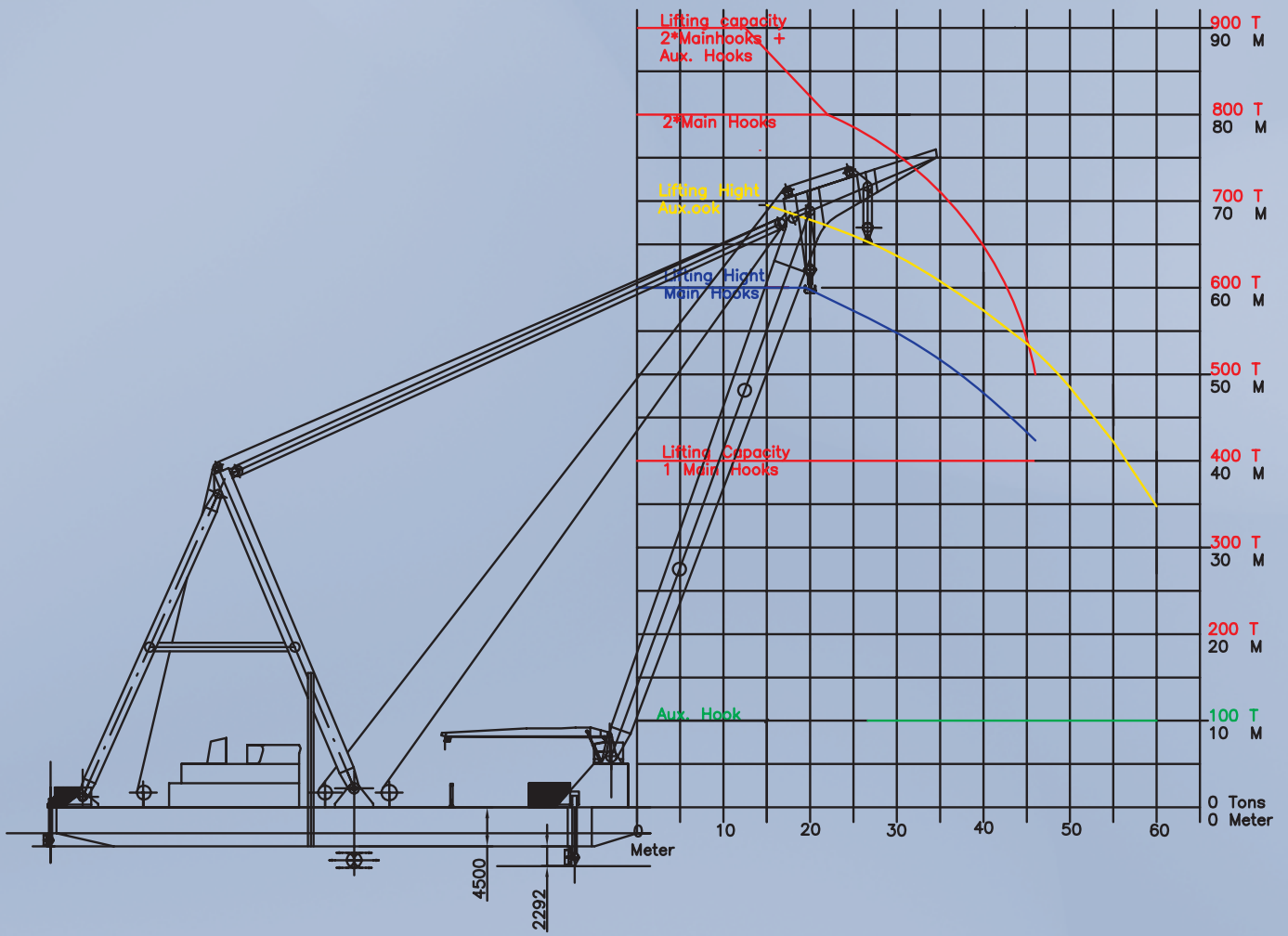
"SAMSON"



DANISH SALVAGE & TOWING COMPANY
DANSK BJERGNING OG BUGSERING A/S







LIFE-SAVING EQUIPMENT

2x12 persons inflatable life rafts
1x Zodiac RB6 rescue-boat (Solas IMO 47 compliant) with 30 HK Marine-engine

AUXILIARY LIFT

Monkey capacity 8 t
Deck crane outreach 19 m: 5 t

ANCHOR PILLARS

2xhydraulic legs Length: 20 m each
Max operational water depth 14 m

ANCHORS & CHAINS

4xpositioning anchors Each: 3 t
2xship anchors Each: 3 t
Chain L: 220 m • Ø: 40 mm

WORKBOAT »FRU GITTE«

MAIN CHARACTERISTICS

Length overall 10.00 m
Beam overall 3.00 m
Draght 1.00 m

MACHINERY

1xSchottel 250 kW
Bollard Pull 4.00 t

MAIN CHARACTERISTICS

Length overall 67.00 m
Beam overall 27.00 m
Depth main deck midship 5.00 m
Depth main deck at side 4.50 m
Draft with bowthruster (max) 6.00 m
Draft with bowthruster (min.) 3.90 m
Draft without bowthruster (max) 3.70 m
Draft without bowthruster (min.) 1.60 m
Sailing height (min.) 41.50 m
Gross tonnage 2.334

PROPULSION - MACHINERY

Aft.: 2xSchottel navigators 2x316 kW
Forward: 1xSchottel navigator 1x439 kW

ACCOMMODATION

Officers 2 cabins with 1 berth
Crew 3 cabins with 1 berths
Passengers 3 cabins with 2 berths
Messroom, gallery, stores, sanitary spaces, fully air-conditioned

REGISTRATION

Type Sheerlegs
Owner DBB Denmark
Year built 1998
Builder Hyup Sung Shipbuilding & Eng. Co. Ltd.
Flag DK
Classification Det Norske Veritas
Call sign OYTK2
Homeport Grenaa – Denmark

LIFTING CHARACTERISTICS

Max lifting capacity 900 t • 2xhooks: 2x400 t • 1xhook: 1x100 t
Max lifting height 67 m

MOORING WINCHES

Aft.:
4x15 t cap. – wipe rope 2x300 m – Ø: 44 mm • 2x300 m – Ø: 34 mm
Forward:
4x15 t cap. – wipe rope 2x300 m – Ø: 34 mm • 2x300 m – Ø: 26 mm

DANISH SALVAGE & TOWING COMPANY

DANSK BJERGNING OG BUGSERING A/S

Borneovej 28 • DK-8000 Aarhus C
Tlf. +45 87 30 84 00 • Fax +45 87 30 84 10
dbb@dbbsalvage.dk • www.dbbsalvage.dk